

COMPANY GRAPHIC HEADER

COMPANY DESCRIPTION

Lorem ipsum dolor sit amet, consectetur adipiscing elit, sed diam nonummy veniam, quis nostrud ea commodo consequat. Duis autem vel eum iriure dolor in hendrerit in vulputate velit esse molestie consequat, vel illum dolore eu feugiat nulla facilisis.

+ SEE FULL DESCRIPTION

COMPANY URL

www.companywebsite.com

PRODUCT CATEGORIES

Product Category 1
Product Category 2
Product Category 3
Product Category 4

Facebook, Twitter, LinkedIn, Instagram

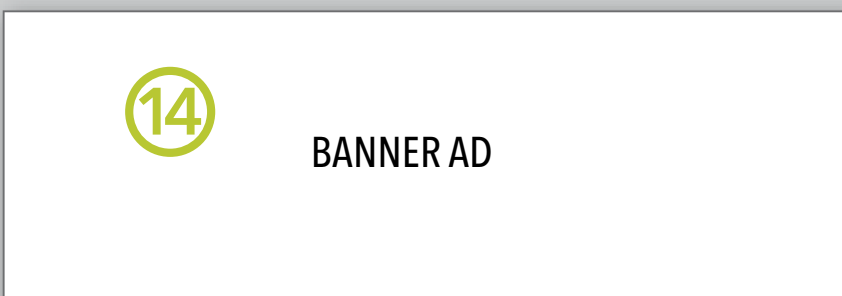
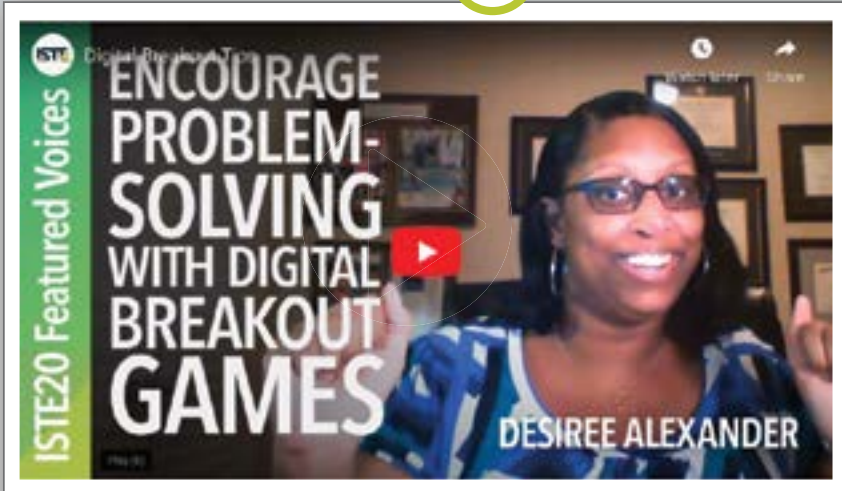
COMPANY CHAT

Hello! May I answer any questions for you?

Yes thanks, I'd like to learn more about...

Request a meeting

WELCOME MESSAGE/INTRO VIDEO



SCHEDULE

BOOTH DEMOS	ISTE20 LIVE SCHEDULE	OTHER ACTIVITIES
Session	LIVE NOW	JOIN
Session	Tue, 2:00 PM	☆
Session	Wed, 4:00 PM	☆
Session	Thu, 2:00 PM	☆

RESOURCES (TOP 3)

Mixed Reality New Places and Spaces for Learning

Immersive technologies are becoming more popular and accessible to consumers, and this means that we are...

Whitepaper

Tweets by @iste

Three ways to foster digital citizenship in schools: bit.ly/32Fdt0y, @Astarks_acps #DigCit #OnlineLearning

Image

STAFF

First Name Last Name
Title

First Name Last Name
Title

First Name Last Name
Title

First Name Last Name
Title

First Name Last Name
Title

ADDITIONAL RESOURCES

Digital Engagement Analytics

As education systems move to reinvent and hybrid learning due to the COVID19 pandemic, more teaching and learning...

Whitepaper

VIEW >

Image

Image

Tweets by @iste

Choose your learning experience with #ISTE20! Upcoming fall courses include:

- > Digital Citizenship in Action
- > Introduction to Computational Thinking for Every Educator
- > Launch into Learning Sciences: How Learning Works

Technology Blueprint for Distance Learning

A Guide for Implementing Remote Learning in Education Systems

Guide

VIEW >

1 Graphic header

File types accepted: SVG, PNG, JPG, JPEG, GIF
Dimensions: Desktop - 1900px wide by 190px tall
 Mobile - 600px wide by 200px tall
File size: max 1MB

2 Company logo

File types accepted: SVG, PNG, JPG, JPEG, GIF
Dimensions: maximum allowable width 510px; maximum allowable height 510px. (510px wide by 185px tall shown here)
File size: max 1MB
 Logo can be linked to a URL.

3 Company description

Length: max 200 words
Customization: tools will be provided for basic dressing such as bolding, italics, and trademark symbols.

4 Company URL

Exhibitors will be able to set an abbreviated display URL.
Display URL: max 40 characters
Direct URL: no character limit

5 Product/service categories

Self-selected by the exhibitor in the virtual exhibitor application/contract and/or updated in the Exhibitor Services Portal.

6 Social media icons

Direct to exhibitor's social media handles.

7 Chat screen

Attendees will be able to initiate text chat with the company in this window.

8 Booth staff profiles

Five booth staff can be active in the virtual booth at any time for the Premium package. Attendees can see who is available and directly initiate 1:1 text and video chat with an available staff member. Each booth staff registered will provide the following info as part of their staff profile: Each booth staff registered will provide the following info as part of their staff profile:
First Name
Last Name
Title: 20 characters max
Photo
Dimensions: 150px wide by 200px tall
File types accepted: PNG, JPG
File size: max 1MB
Bio: 70 characters max

9 Favorite this exhibitor

Attendees can favorite an exhibitor to easily revisit them through the attendee's personalized dashboard.

10 Quick download

Allows an attendee to add all exhibitor resources to their digital tote with a single click.

11 Lead retrieval

Attendees can select this button to share their contact information with an exhibitor. Exhibitors can customize text in the call-to-action button.
Button text: max 35 characters
 Sample button names:
 a. How can we help you?
 b. My needs assessment
 c. Get more info
 With the premium package, exhibitors can provide up to seven custom questions to ask an attendee in order to qualify a lead upon capture.

12 Meeting scheduler tool

Attendees can request a meeting with an exhibitor using this tool. The request will then be sent to the exhibitor and added to the attendee's schedule.

13 Welcome/intro video

This is an embedded prerecorded video to catch the attention of attendees and offer a preview of your company.
File types accepted: Submit URL - Only accept links to YouTube or Vimeo hosted videos
Length: 5 min
Thumbnail: Set in YouTube or Vimeo
Title: max 40 characters

14 Banner ad

A static or animated banner ad allows you to further customize your profile.
File types accepted: SVG, PNG, JPG, JPEG, GIF
Dimensions: 600px wide by 150px tall
File size: max 1MB

15 Schedule

This will be a three-tab schedule. The first tab indicates the exhibitor created schedule for live booth demos. Visiting attendees can enter an active demo as capacity allows (demos are 1:6 in the Premium package). The second tab will show any official ISTE20 Live conference programming that is connected to the exhibitor such as Tools that Work and sponsored Spotlight on Solutions sessions. The third tab will include an exhibitor created schedule of independently hosted content operating off core conference hours. Exhibitor provided links will be listed here.

16 Resource Uploads

Premium package includes unlimited uploads. You will have the opportunity to assign a product category or a special tag to each resource so that attendees may filter upon that topic.
PDFs
File size: max 3 MB
Word Documents
File size: max 3 MB
Images
File size: max 800 KB
File types accepted: SVG, PNG, JPG, JPEG, GIF
Twitter or Facebook Feed
Submission needs: feed URL
Website
Submission needs: URL and thumbnail image
Thumbnail file types accepted: SVG, PNG, JPG, JPEG, GIF
Thumbnail file size: max 800 KB
Videos
File types accepted: Submit URL - Only accept links to YouTube or Vimeo hosted videos
Thumbnail: Set in YouTube or Vimeo