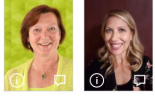


★ THE NEW NORMAL?

In response to the pandemic, educators quickly created innovative virtual and hybrid environments. In the new normal, how do we ensure we're preparing students for the opportunities of the future, while embedding social-emotional learning and human connection in the ecosystems we create?

PRESENTERS



Camilla Gagliolo
Senior Director
Event Content

Gretchen Heberling
adsg

TOPIC

DISTANCE, ONLINE & BLENDED LEARNING

SUBJECT AREA

CAREER AND TECHNICAL EDUCATION

AUDIENCE

PRINCIPALS/HEAD TEACHERS
TEACHERS
PROFESSIONAL DEVELOPERS

9-12 BEGINNER
45 MINUTES

TUE, JUN 29, 12 - 12:45PM

ATTENDEE DEVICES/SPECIFICATIONS

DEMO VIDEO

View Larger | Add to tote | Go to tote

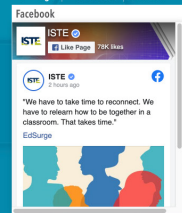
The Must-Attend Education Conference of the Summer



This is a placeholder. The chat for the Poster session will be open closer to the event.

RESOURCES

View Larger | Add to tote | Go to tote



View Larger | Add to tote | Go to tote



View Larger | Add to tote | Go to tote

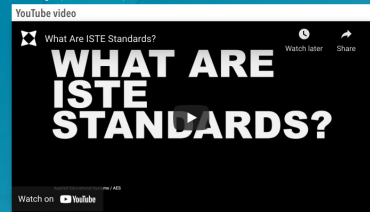


Add all these resources to my digital tote

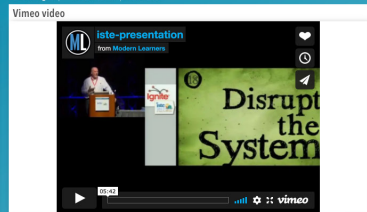
View Larger | Add to tote | Go to tote



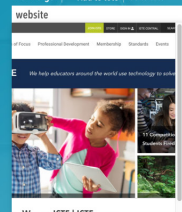
View Larger | Add to tote | Go to tote



View Larger | Add to tote | Go to tote



View Larger | Add to tote | Go to tote



MORE INFORMATION –

Purpose & objective

Sample text

Outline

- I. Intro (10 mins)
- II. Distance Learning (15 mins)
- III. Conclusion - Why this matters (5 mins)

Supporting research

Sample text

AUDIENCE: +

SKILL LEVEL: +

ATTENDEE DEVICES: +

TOPIC: +

GRADE LEVEL: +

SUBJECT AREA: +

ISTE STANDARDS: +

POSTER LOGISTICS

Your poster will be available for viewing throughout the conference. During your scheduled presentation time, you will click on the "Live Now" button to enter your discussion room. Your room will accommodate up to 100 people including presenters.

Attendees can drop in to learn more about your poster and engage more deeply with the content. We encourage you to prepare a three- to five-minute presentation that you can repeat during the 45 minutes if attendees arrive late, much like in the face-to-face environment.

To help you prepare, we're offering training on our virtual platform as follows:

Saturday June 5, 2021 at 10:30am PST

Wednesday June 9, 2021 at 4pm PST

Friday June 11, 2021 at 8am PST

You'll receive an e-mail with the link to the Zoom meeting the day before the training. If you aren't able to attend a live training you can access an archived recording.

GALLERY IMAGE UPLOAD BY JUNE 15

Posters will be displayed in a graphically rich poster gallery. You can add an image to represent your poster in the poster gallery. This can be a thumbnail of your video or an image related to your poster. If you do not upload an image, we will auto-generate a thumbnail of your video for the gallery.

BUILDING YOUR POSTER BY JUNE 15

Top Section

The top section of your poster will already be populated with information about your session: title, description, presenters, topic, subject area, audience, grade level, skill level, schedule information for your live presentation, and attendee devices and specifications. Update these fields using the edit button at the top of the screen.

Demo Video (required by June 15)

The next section is for your demo video, which is required for your poster to be added to the poster gallery. Please prepare a three- to five-minute video to catch the attention of attendees and offer a preview of your project. You will submit your video as a URL link to a YouTube- or Vimeo-hosted video.

Poster Chat

Next to your video, there's a chat window attendees can use to post messages. This chat feature will be available for the entire event.

Adding Resources

The resource section is where you can build your poster by adding images, PDFs, URLs to websites, a Facebook or Twitter feed, or more videos. After uploading these resources you can rearrange them on the page or delete them.

Additional Information

The final section is populated with more information from your session details: purpose & objective, outline, and supporting research.

On the right side of the page is a summary of information about your proposal including the ISTE Standards that are addressed.

Times and dates are displayed based on your device's time zone setting.